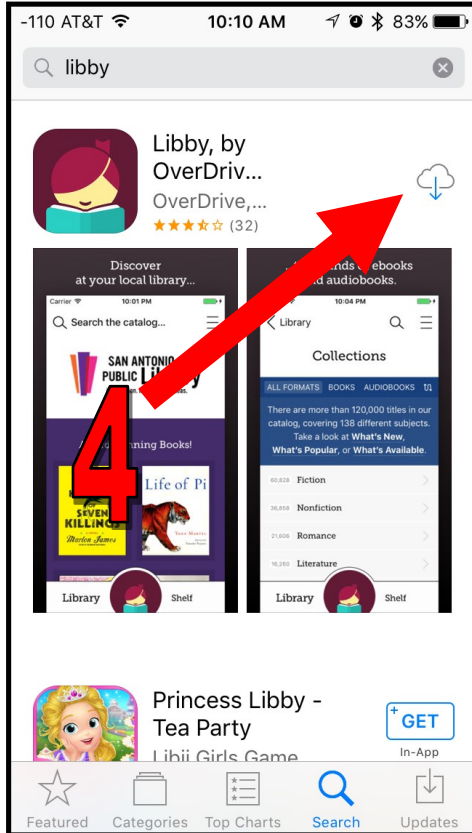
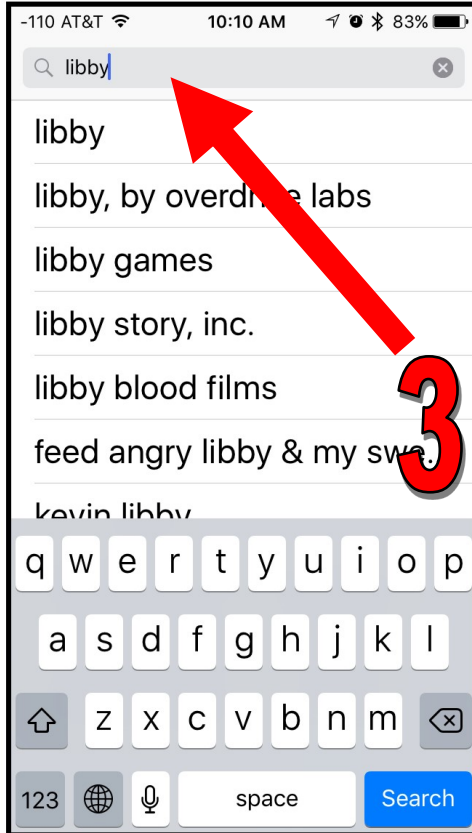
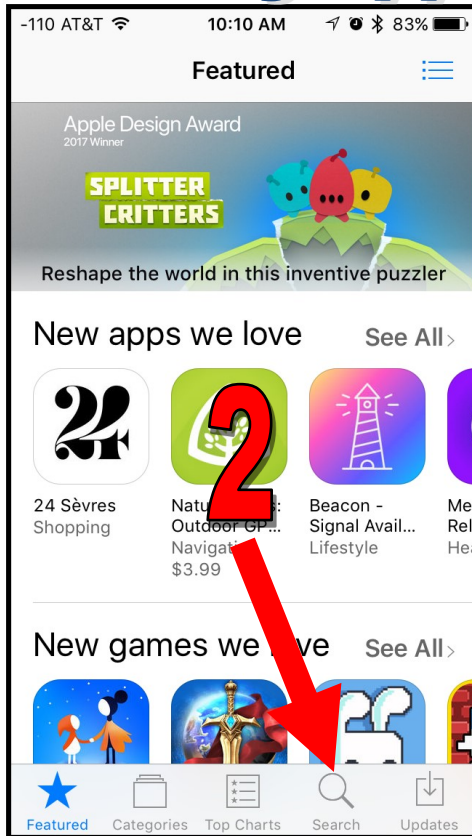
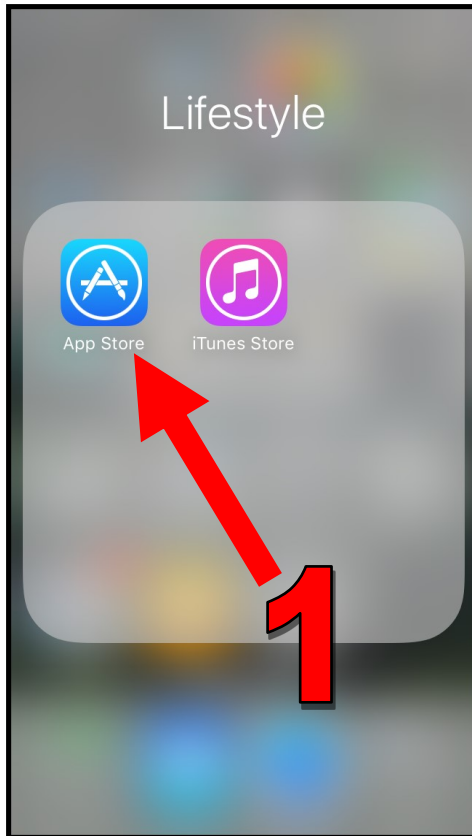


Get the iPhone Libby app

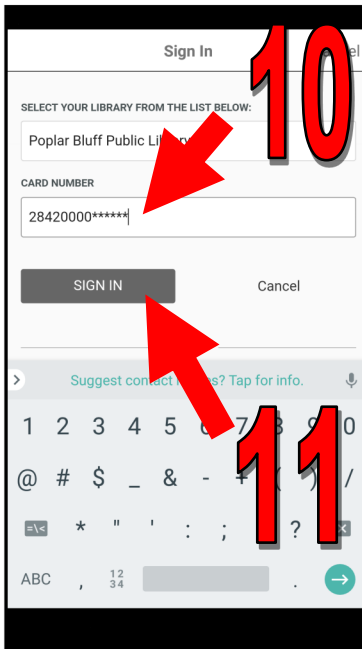
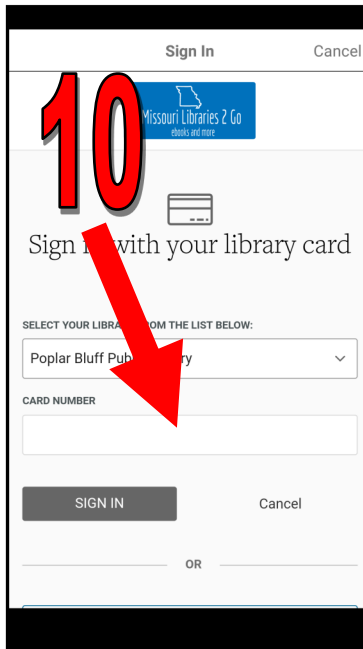
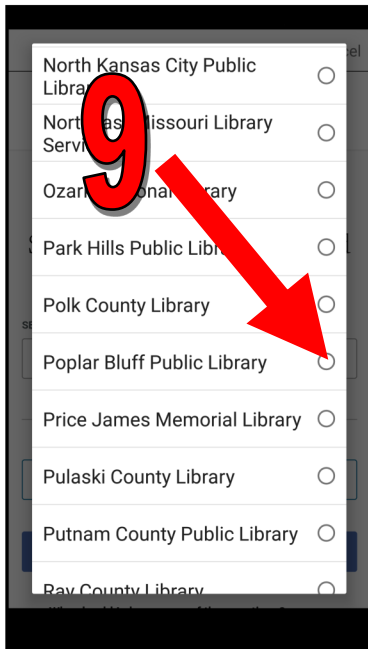
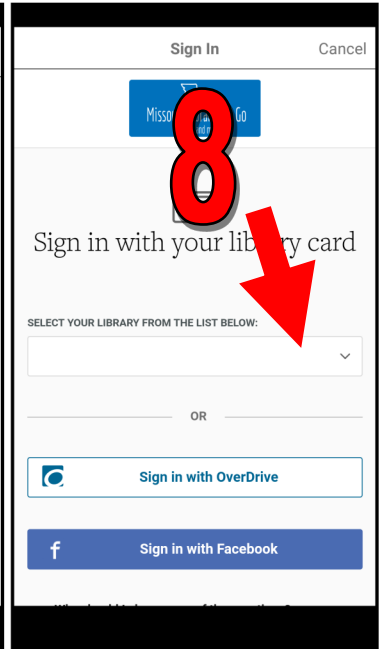
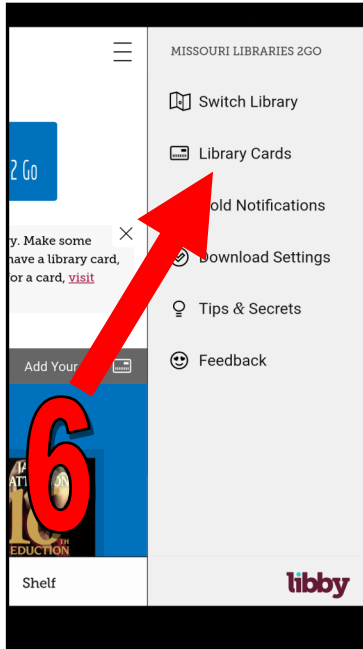
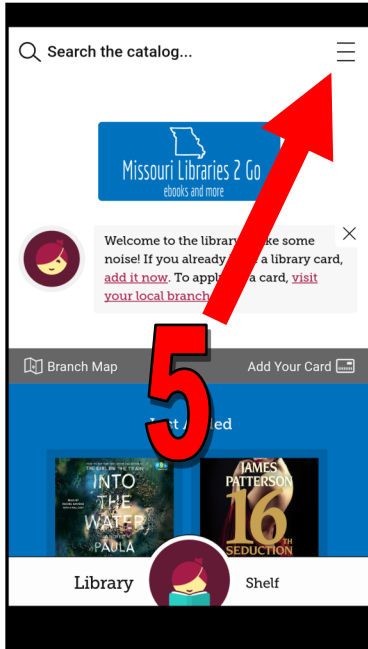
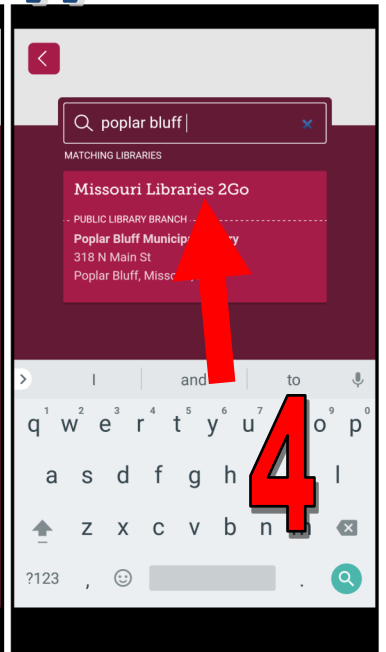
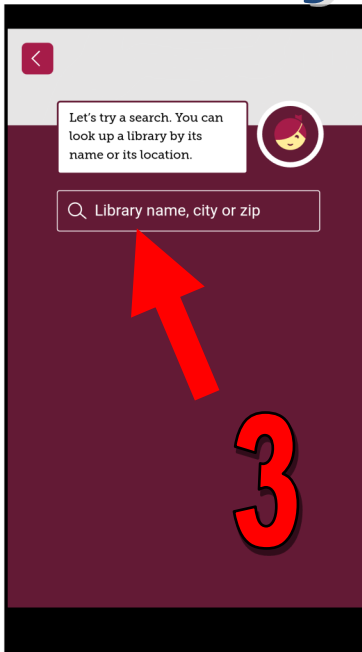
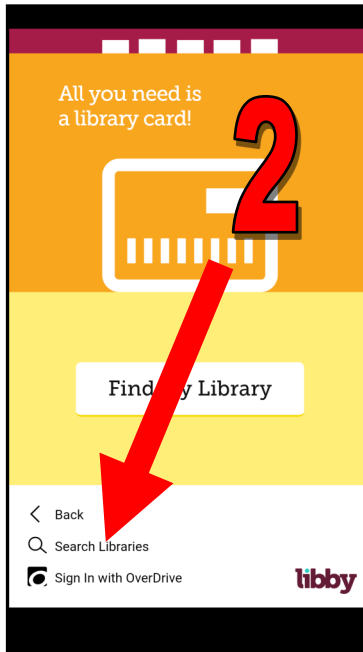
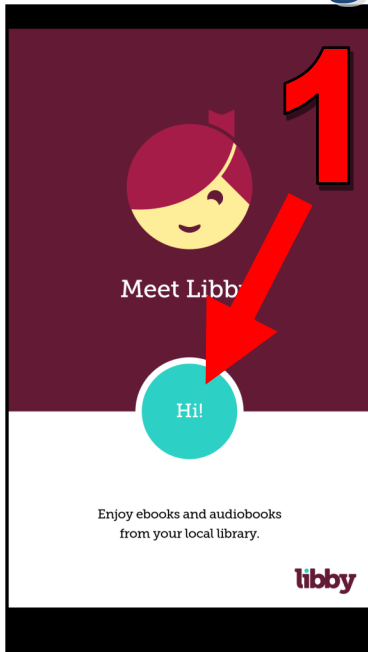


libby

Meet Libby.
Your digital library made easy.



Sign in on the iPhone Libby app



1. Tap "Hi!"
2. Tap "Search Libraries"
3. Tap "Library name, city or zip" and type Poplar Bluff
4. Tap "Missouri Libraries 2Go"
5. Tap the three lines
6. Tap Library Cards
7. Tap Sign In
8. Tap Selection box
9. Choose "Poplar Bluff Public Library"
10. Enter your card number
11. Sign in!