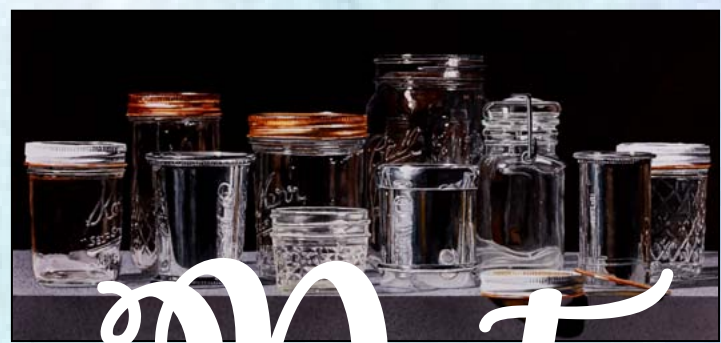


WELCOME BACK WATERCOLOR NOW! 2020

AN
EXHIBITION
OF
WATERCOLOR
USA
HONOR
SOCIETY
MEMBERS
WATERCOLORS

*Sixty-two works
by sixty-two of the
finest watercolorists
in the country from
coast to coast!*



See the Date
December 5th through January 24th, 2021
at the Margaret Harwell Art Museum

Director Steve Whitworth of the
Margaret Harwell Art Museum

IS THRILLED TO WELCOME BACK THE ESTEEMED MEMBERS OF THE
Watercolor Honor Society (WHS), in Watercolor Now! 2020.

The people of Poplar Bluff were thrilled to see such fine art from such a far wide field in Watercolor Now! 2018. Many of our residents regularly take the journey to Springfield MO to see Watercolor USA. Knowing that winning awards in that competition is the qualifier for membership in the Watercolor Honor Society, adds prestige to this event. To have a return of this biennial exhibit in 2020 is a great honor! This is a tremendous event, with high quality water media, created by top artists from coast to coast, border to border. To be able to see the original work in person, up close, is a rare treat for the aficionado, and a great learning opportunity for fellow artists.

THE CITY OF POPLAR BLUFF WILL CELEBRATE THE RETURN OF THIS EXHIBIT WITH A
RECEPTION ON SATURDAY, DECEMBER 5TH, FROM 6:00 UNTIL 9:00 P.M.

WE ASK THAT THOSE EXHIBITING MEMBERS PLANNING TO ATTEND, LET US KNOW
SO THAT WE MAY HAVE NAME BADGES PREPARED FOR THEM AS GUESTS OF HONOR.

Wine and hors d'oeuvres will be served with covid precautions observed.

Admission is free, with additional funding from the Missouri Arts Council, a state agency.

At this time, face masks for visitors are recommended but not required. We will continue to follow Butler County, MO guidelines and requirements as they are influenced by evolving conditions. The museum will continue to remain as accessible to the public as is safely possible. If any WHS members (or the public at large), are concerned about crowding, but wish to see the exhibit, the director will gladly make appointments for special, private tours of the exhibit, after or before regular hours. Social distancing will be strongly encouraged. We have an upstairs gallery where some of the works will be displayed. Overflow may congregate there. This will be December, but if weather cooperates, guests may enjoy our beautiful sculpture garden. We may set up our event tent with warming-lamps as well. Parties who come together may stay together, others are encouraged to keep a safe distance. Wine and hors d'oeuvres will be served in disposable glasses and dishes. Sanitation stations will be available at the entry, and throughout the museum. This is a rare opportunity for our area residents to have the chance to speak to, and learn from, such a large number of exceptional artists! We want to maximize the number of safe interactions as possible.

We look forward to putting out the WELCOME MAT for this renowned society!

We hope to meet as many members as is possible!

We are also pleased to ring in the new year with this exhibit.

It will remain on display through January 24, 2021.

Margaret Harwell Art Museum



Tuesday through Friday 12-4 pm
Saturday and Sunday 1-4 pm
Tours by Reservation
No Admission Charge
Physically Impaired Accessible

421 N. Main Street
Poplar Bluff, MO 63901
(573) 686-8002
Fax (573) 686-8017
www.mham.org



Financial assistance for
this project has been provided
by the Missouri Arts
Council, a State Agency.

Save the Date
December 5, 2020 - January 24, 2021

at the Margaret Harwell Art Museum